

**Texas Prior Authorization Program  
Clinical Criteria**

---

**Drug/Drug Class**

## **Xyrem (Sodium Oxybate)**

**Clinical Criteria Information Included in this Document**

- **Drugs requiring prior authorization:** the list of drugs requiring prior authorization for this clinical criteria
- **Prior authorization criteria logic:** a description of how the prior authorization request will be evaluated against the clinical criteria rules
- **Logic diagram:** a visual depiction of the clinical criteria logic
- **Supporting tables:** a collection of information associated with the steps within the criteria (diagnosis codes, procedure codes, and therapy codes); provided when applicable

**Note:** Click the hyperlink to navigate directly to that section.

**Revision Notes**

Removed specialist requirement from criteria

Added GCN for sodium oxybate solution (18104)



## Xyrem (Sodium Oxybate)

### Drugs Requiring Prior Authorization

The listed GCNS may not be an indication of TX Medicaid Formulary coverage. To learn the current formulary coverage, visit [TxVendorDrug.com/formulary/formulary-search](https://TxVendorDrug.com/formulary/formulary-search).

Drugs Requiring Prior Authorization	
Label Name	GCN
SODIUM OXYBATE 0.5 G/ML SOLN	18104
XYREM 500 MG/ML ORAL SOLUTION	18104



## Xyrem (Sodium Oxybate)

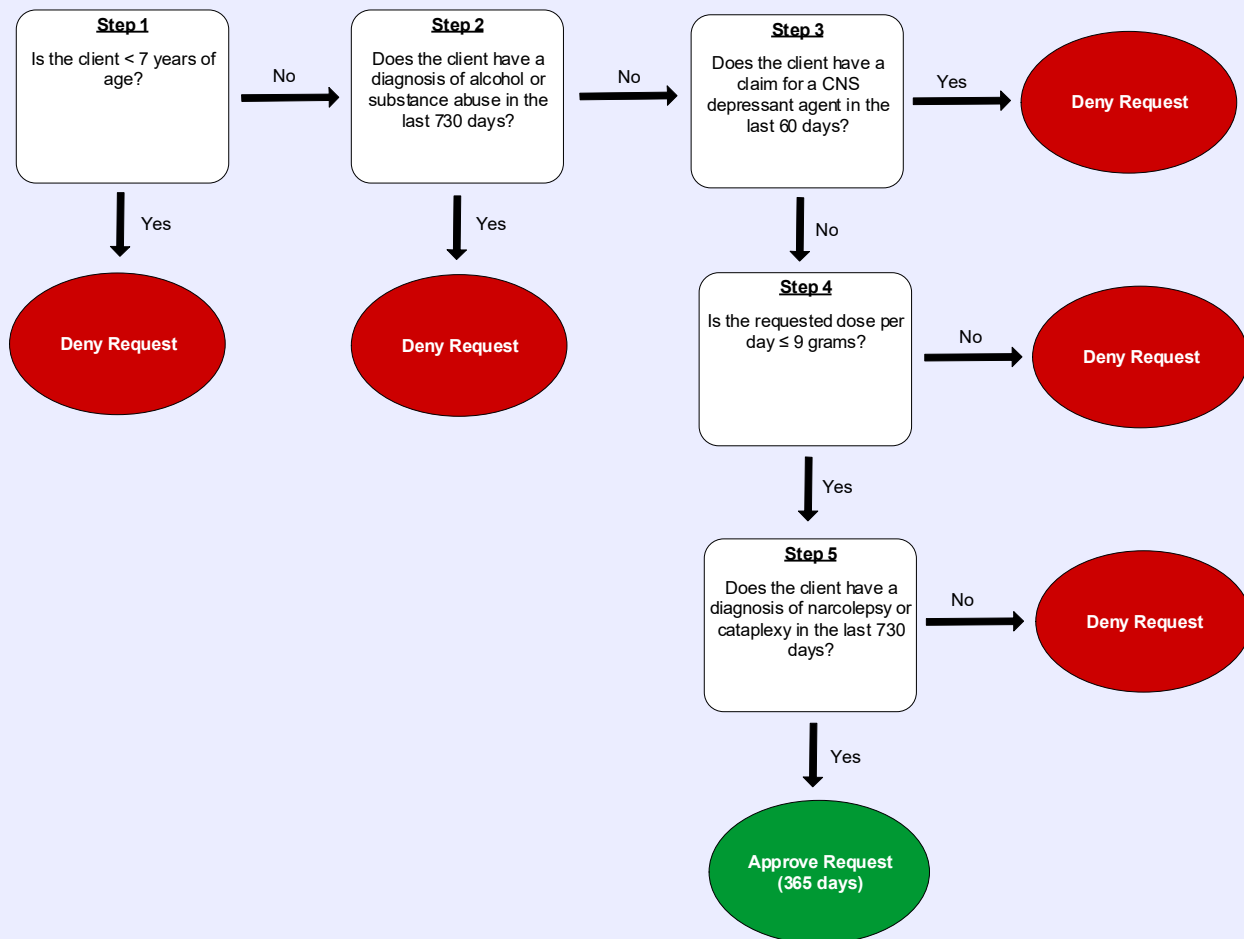
### Clinical Criteria Logic

1. Is the client less than (<) 7 years of age?  
 Yes (Deny)  
 No (Go to #2)
2. Does the client have a diagnosis of alcohol or substance abuse in the last 730 days?  
 Yes (Deny)  
 No (Go to #3)
3. Does the client have a claim for a CNS depressant agent in the last 60 days?  
 Yes (Deny)  
 No (Go to #4)
4. Is the requested dose per day less than or equal to ( $\leq$ ) 9 grams?  
 Yes (Go to #5)  
 No (Deny)
5. Does the client have a diagnosis of narcolepsy or cataplexy in the last 730 days?  
 Yes (Approve – 365 days)  
 No (Deny)



# Xyrem (Sodium Oxybate)

## Clinical Criteria Logic Diagram





## Xyrem (Sodium Oxybate)

### Clinical Criteria Supporting Tables

<b>Step 2 (diagnosis of alcohol or substance abuse)</b>	
<b>Required diagnosis: 1</b>	
<b>Look back timeframe: 730 days</b>	
<b>ICD-10 Code</b>	<b>Description</b>
F1010	ALCOHOL ABUSE, UNCOMPLICATED
F10120	ALCOHOL ABUSE WITH INTOXICATION, UNCOMPLICATED
F10129	ALCOHOL ABUSE WITH INTOXICATION, UNSPECIFIED
F1020	ALCOHOL DEPENDENCE, UNCOMPLICATED
F1021	ALCOHOL DEPENDENCE, IN REMISSION
F10220	ALCOHOL DEPENDENCE WITH INTOXICATION, UNCOMPLICATED
F10229	ALCOHOL DEPENDENCE WITH INTOXICATION, UNSPECIFIED
F1110	OPIOID ABUSE, UNCOMPLICATED
F11120	OPIOID ABUSE WITH INTOXICATION, UNCOMPLICATED
F11129	OPIOID ABUSE WITH INTOXICATION, UNSPECIFIED
F1120	OPIOID DEPENDENCE, UNCOMPLICATED
F1121	OPIOID DEPENDENCE, IN REMISSION
F11220	OPIOID DEPENDENCE WITH INTOXICATION, UNCOMPLICATED
F11221	OPIOID DEPENDENCE WITH INTOXICATION DELIRIUM
F11222	OPIOID DEPENDENCE WITH INTOXICATION WITH PERCEPTUAL DISTURBANCE
F11229	OPIOID DEPENDENCE WITH INTOXICATION, UNSPECIFIED
F1123	OPIOID DEPENDENCE WITH WITHDRAWAL
F1124	OPIOID DEPENDENCE WITH OPIOID-INDUCED MOOD DISORDER
F11250	OPIOID DEPENDENCE WITH OPIOID-INDUCED PSYCHOTIC DISORDER WITH DELUSIONS
F11251	OPIOID DEPENDENCE WITH OPIOID-INDUCED PSYCHOTIC DISORDER WITH HALLUCINATIONS
F11259	OPIOID DEPENDENCE WITH OPIOID-INDUCED PSYCHOTIC DISORDER, UNSPECIFIED
F11281	OPIOID DEPENDENCE WITH OPIOID-INDUCED SEXUAL DYSFUNCTION
F11282	OPIOID DEPENDENCE WITH OPIOID-INDUCED SLEEP DISORDER
F11288	OPIOID DEPENDENCE WITH OTHER OPIOID-INDUCED DISORDER
F1129	OPIOID DEPENDENCE WITH UNSPECIFIED OPIOID-INDUCED DISORDER
F1190	OPIOID USE, UNSPECIFIED, UNCOMPLICATED
F1210	CANNABIS ABUSE, UNCOMPLICATED

<b>Step 2 (diagnosis of alcohol or substance abuse)</b>	
<b>Required diagnosis: 1</b>	
<b>Look back timeframe: 730 days</b>	
<b>ICD-10 Code</b>	<b>Description</b>
F1220	CANNABIS DEPENDENCE, UNCOMPLICATED
F1221	CANNABIS DEPENDENCE, IN REMISSION
F12220	CANNABIS DEPENDENCE WITH INTOXICATION, UNCOMPLICATED
F12221	CANNABIS DEPENDENCE WITH INTOXICATION DELIRIUM
F12222	CANNABIS DEPENDENCE WITH INTOXICATION WITH PERCEPTUAL DISTURBANCE
F12229	CANNABIS DEPENDENCE WITH INTOXICATION, UNSPECIFIED
F12250	CANNABIS DEPENDENCE WITH PSYCHOTIC DISORDER WITH DELUSIONS
F12251	CANNABIS DEPENDENCE WITH PSYCHOTIC DISORDER WITH HALLUCINATIONS
F12259	CANNABIS DEPENDENCE WITH PSYCHOTIC DISORDER, UNSPECIFIED
F12280	CANNABIS DEPENDENCE WITH CANNABIS-INDUCED ANXIETY DISORDER
F12288	CANNABIS DEPENDENCE WITH OTHER CANNABIS-INDUCED DISORDER
F1229	CANNABIS DEPENDENCE WITH UNSPECIFIED CANNABIS-INDUCED DISORDER
F1290	CANNABIS USE, UNSPECIFIED, UNCOMPLICATED
F1310	SEDATIVE, HYPNOTIC OR ANXIOLYTIC ABUSE, UNCOMPLICATED
F13120	SEDATIVE, HYPNOTIC OR ANXIOLYTIC ABUSE WITH INTOXICATION, UNCOMPLICATED
F1320	SEDATIVE, HYPNOTIC OR ANXIOLYTIC DEPENDENCE, UNCOMPLICATED
F1321	SEDATIVE, HYPNOTIC OR ANXIOLYTIC DEPENDENCE, IN REMISSION
F13220	SEDATIVE, HYPNOTIC OR ANXIOLYTIC DEPENDENCE WITH INTOXICATION, UNCOMPLICATED
F13221	SEDATIVE, HYPNOTIC OR ANXIOLYTIC DEPENDENCE WITH INTOXICATION DELIRIUM
F13229	SEDATIVE, HYPNOTIC OR ANXIOLYTIC DEPENDENCE WITH INTOXICATION, UNSPECIFIED
F13230	SEDATIVE, HYPNOTIC OR ANXIOLYTIC DEPENDENCE WITH WITHDRAWAL, UNCOMPLICATED
F13231	SEDATIVE, HYPNOTIC OR ANXIOLYTIC DEPENDENCE WITH WITHDRAWAL DELIRIUM
F13232	SEDATIVE, HYPNOTIC OR ANXIOLYTIC DEPENDENCE WITH WITHDRAWAL WITH PERCEPTUAL DISTURBANCE
F13239	SEDATIVE, HYPNOTIC OR ANXIOLYTIC DEPENDENCE WITH WITHDRAWAL, UNSPECIFIED
F1324	SEDATIVE, HYPNOTIC OR ANXIOLYTIC DEPENDENCE WITH SEDATIVE, HYPNOTIC OR ANXIOLYTIC-INDUCED MOOD DISORDER
F13250	SEDATIVE, HYPNOTIC OR ANXIOLYTIC DEPENDENCE WITH SEDATIVE, HYPNOTIC OR ANXIOLYTIC-INDUCED PSYCHOTIC DISORDER WITH DELUSIONS
F13251	SEDATIVE, HYPNOTIC OR ANXIOLYTIC DEPENDENCE WITH SEDATIVE, HYPNOTIC OR ANXIOLYTIC-INDUCED PSYCHOTIC DISORDER WITH HALLUCINATIONS

<b>Step 2 (diagnosis of alcohol or substance abuse)</b>	
<b>Required diagnosis: 1</b>	
<b>Look back timeframe: 730 days</b>	
<b>ICD-10 Code</b>	<b>Description</b>
F13259	SEDATIVE, HYPNOTIC OR ANXIOLYTIC DEPENDENCE WITH SEDATIVE, HYPNOTIC OR ANXIOLYTIC-INDUCED PSYCHOTIC DISORDER, UNSPECIFIED
F1326	SEDATIVE, HYPNOTIC OR ANXIOLYTIC DEPENDENCE WITH SEDATIVE, HYPNOTIC OR ANXIOLYTIC-INDUCED PERSISTING AMNESTIC DISORDER
F1327	SEDATIVE, HYPNOTIC OR ANXIOLYTIC DEPENDENCE WITH SEDATIVE, HYPNOTIC OR ANXIOLYTIC-INDUCED PERSISTING DEMENTIA
F13280	SEDATIVE, HYPNOTIC OR ANXIOLYTIC DEPENDENCE WITH SEDATIVE, HYPNOTIC OR ANXIOLYTIC-INDUCED ANXIETY DISORDER
F13281	SEDATIVE, HYPNOTIC OR ANXIOLYTIC DEPENDENCE WITH SEDATIVE, HYPNOTIC OR ANXIOLYTIC-INDUCED SEXUAL DYSFUNCTION
F13282	SEDATIVE, HYPNOTIC OR ANXIOLYTIC DEPENDENCE WITH SEDATIVE, HYPNOTIC OR ANXIOLYTIC-INDUCED SLEEP DISORDER
F13288	SEDATIVE, HYPNOTIC OR ANXIOLYTIC DEPENDENCE WITH OTHER SEDATIVE, HYPNOTIC OR ANXIOLYTIC-INDUCED DISORDER
F1329	SEDATIVE, HYPNOTIC OR ANXIOLYTIC DEPENDENCE WITH UNSPECIFIED SEDATIVE, HYPNOTIC OR ANXIOLYTIC-INDUCED DISORDER
F1390	SEDATIVE, HYPNOTIC, OR ANXIOLYTIC USE, UNSPECIFIED, UNCOMPLICATED
F1410	COCAINE ABUSE, UNCOMPLICATED
F14120	COCAINE ABUSE WITH INTOXICATION, UNCOMPLICATED
F1420	COCAINE DEPENDENCE, UNCOMPLICATED
F1421	COCAINE DEPENDENCE, IN REMISSION
F14220	COCAINE DEPENDENCE WITH INTOXICATION, UNCOMPLICATED
F14221	COCAINE DEPENDENCE WITH INTOXICATION DELIRIUM
F14222	COCAINE DEPENDENCE WITH INTOXICATION WITH PERCEPTUAL DISTURBANCE
F14229	COCAINE DEPENDENCE WITH INTOXICATION, UNSPECIFIED
F1423	COCAINE DEPENDENCE WITH WITHDRAWAL
F1424	COCAINE DEPENDENCE WITH COCAINE-INDUCED MOOD DISORDER
F14250	COCAINE DEPENDENCE WITH COCAINE-INDUCED PSYCHOTIC DISORDER WITH DELUSIONS
F14251	COCAINE DEPENDENCE WITH COCAINE-INDUCED PSYCHOTIC DISORDER WITH HALLUCINATIONS
F14259	COCAINE DEPENDENCE WITH COCAINE-INDUCED PSYCHOTIC DISORDER, UNSPECIFIED
F14280	COCAINE DEPENDENCE WITH COCAINE-INDUCED ANXIETY DISORDER
F14281	COCAINE DEPENDENCE WITH COCAINE-INDUCED SEXUAL DYSFUNCTION
F14282	COCAINE DEPENDENCE WITH COCAINE-INDUCED SLEEP DISORDER
F14288	COCAINE DEPENDENCE WITH OTHER COCAINE-INDUCED DISORDER
F1429	COCAINE DEPENDENCE WITH UNSPECIFIED COCAINE-INDUCED DISORDER

<b>Step 2 (diagnosis of alcohol or substance abuse)</b>	
<b>Required diagnosis: 1</b>	
<b>Look back timeframe: 730 days</b>	
<b>ICD-10 Code</b>	<b>Description</b>
F1490	COCAINE USE, UNSPECIFIED, UNCOMPLICATED
F1510	OTHER STIMULANT ABUSE, UNCOMPLICATED
F15120	OTHER STIMULANT ABUSE WITH INTOXICATION, UNCOMPLICATED
F1520	OTHER STIMULANT DEPENDENCE, UNCOMPLICATED
F1521	OTHER STIMULANT DEPENDENCE, IN REMISSION
F15220	OTHER STIMULANT DEPENDENCE WITH INTOXICATION, UNCOMPLICATED
F15221	OTHER STIMULANT DEPENDENCE WITH INTOXICATION DELIRIUM
F15222	OTHER STIMULANT DEPENDENCE WITH INTOXICATION WITH PERCEPTUAL DISTURBANCE
F15229	OTHER STIMULANT DEPENDENCE WITH INTOXICATION, UNSPECIFIED
F1523	OTHER STIMULANT DEPENDENCE WITH WITHDRAWAL
F1524	OTHER STIMULANT DEPENDENCE WITH STIMULANT-INDUCED MOOD DISORDER
F15250	OTHER STIMULANT DEPENDENCE WITH STIMULANT-INDUCED PSYCHOTIC DISORDER WITH DELUSIONS
F15251	OTHER STIMULANT DEPENDENCE WITH STIMULANT-INDUCED PSYCHOTIC DISORDER WITH HALLUCINATIONS
F15259	OTHER STIMULANT DEPENDENCE WITH STIMULANT-INDUCED PSYCHOTIC DISORDER, UNSPECIFIED
F15280	OTHER STIMULANT DEPENDENCE WITH STIMULANT-INDUCED ANXIETY DISORDER
F15281	OTHER STIMULANT DEPENDENCE WITH STIMULANT-INDUCED SEXUAL DYSFUNCTION
F15282	OTHER STIMULANT DEPENDENCE WITH STIMULANT-INDUCED SLEEP DISORDER
F15288	OTHER STIMULANT DEPENDENCE WITH OTHER STIMULANT-INDUCED DISORDER
F1529	OTHER STIMULANT DEPENDENCE WITH UNSPECIFIED STIMULANT-INDUCED DISORDER
F1590	OTHER STIMULANT USE, UNSPECIFIED, UNCOMPLICATED
F1610	HALLUCINOGEN ABUSE, UNCOMPLICATED
F16120	HALLUCINOGEN ABUSE WITH INTOXICATION, UNCOMPLICATED
F1620	HALLUCINOGEN DEPENDENCE, UNCOMPLICATED
F1621	HALLUCINOGEN DEPENDENCE, IN REMISSION
F16220	HALLUCINOGEN DEPENDENCE WITH INTOXICATION, UNCOMPLICATED
F16221	HALLUCINOGEN DEPENDENCE WITH INTOXICATION WITH DELIRIUM
F16229	HALLUCINOGEN DEPENDENCE WITH INTOXICATION, UNSPECIFIED
F1624	HALLUCINOGEN DEPENDENCE WITH HALLUCINOGEN-INDUCED MOOD DISORDER
F16250	HALLUCINOGEN DEPENDENCE WITH HALLUCINOGEN-INDUCED PSYCHOTIC DISORDER WITH DELUSIONS



<b>Step 2 (diagnosis of alcohol or substance abuse)</b>	
<b>Required diagnosis: 1</b>	
<b>Look back timeframe: 730 days</b>	
<b>ICD-10 Code</b>	<b>Description</b>
F16251	HALLUCINOGEN DEPENDENCE WITH HALLUCINOGEN-INDUCED PSYCHOTIC DISORDER WITH HALLUCINATIONS
F16259	HALLUCINOGEN DEPENDENCE WITH HALLUCINOGEN-INDUCED PSYCHOTIC DISORDER, UNSPECIFIED
F16280	HALLUCINOGEN DEPENDENCE WITH HALLUCINOGEN-INDUCED ANXIETY DISORDER
F16283	HALLUCINOGEN DEPENDENCE WITH HALLUCINOGEN PERSISTING PERCEPTION DISORDER (FLASHBACKS)
F16288	HALLUCINOGEN DEPENDENCE WITH OTHER HALLUCINOGEN-INDUCED DISORDER
F1629	HALLUCINOGEN DEPENDENCE WITH UNSPECIFIED HALLUCINOGEN-INDUCED DISORDER
F1690	HALLUCINOGEN USE, UNSPECIFIED, UNCOMPLICATED
F1810	INHALANT ABUSE, UNCOMPLICATED
F18120	INHALANT ABUSE WITH INTOXICATION, UNCOMPLICATED
F1820	INHALANT DEPENDENCE, UNCOMPLICATED
F1821	INHALANT DEPENDENCE, IN REMISSION
F18220	INHALANT DEPENDENCE WITH INTOXICATION, UNCOMPLICATED
F18221	INHALANT DEPENDENCE WITH INTOXICATION DELIRIUM
F18229	INHALANT DEPENDENCE WITH INTOXICATION, UNSPECIFIED
F1824	INHALANT DEPENDENCE WITH INHALANT-INDUCED MOOD DISORDER
F18250	INHALANT DEPENDENCE WITH INHALANT-INDUCED PSYCHOTIC DISORDER WITH DELUSIONS
F18251	INHALANT DEPENDENCE WITH INHALANT-INDUCED PSYCHOTIC DISORDER WITH HALLUCINATIONS
F18259	INHALANT DEPENDENCE WITH INHALANT-INDUCED PSYCHOTIC DISORDER, UNSPECIFIED
F1827	INHALANT DEPENDENCE WITH INHALANT-INDUCED DEMENTIA
F18280	INHALANT DEPENDENCE WITH INHALANT-INDUCED ANXIETY DISORDER
F18288	INHALANT DEPENDENCE WITH OTHER INHALANT-INDUCED DISORDER
F1829	INHALANT DEPENDENCE WITH UNSPECIFIED INHALANT-INDUCED DISORDER
F1890	INHALANT USE, UNSPECIFIED, UNCOMPLICATED
F1920	OTHER PSYCHOACTIVE SUBSTANCE DEPENDENCE, UNCOMPLICATED
F1921	OTHER PSYCHOACTIVE SUBSTANCE DEPENDENCE, IN REMISSION
F19220	OTHER PSYCHOACTIVE SUBSTANCE DEPENDENCE WITH INTOXICATION, UNCOMPLICATED
F19221	OTHER PSYCHOACTIVE SUBSTANCE DEPENDENCE WITH INTOXICATION DELIRIUM
F19222	OTHER PSYCHOACTIVE SUBSTANCE DEPENDENCE WITH INTOXICATION WITH PERCEPTUAL DISTURBANCE

<b>Step 2 (diagnosis of alcohol or substance abuse)</b>	
<b>Required diagnosis: 1</b>	
<b>Look back timeframe: 730 days</b>	
<b>ICD-10 Code</b>	<b>Description</b>
F19229	OTHER PSYCHOACTIVE SUBSTANCE DEPENDENCE WITH INTOXICATION, UNSPECIFIED
F19230	OTHER PSYCHOACTIVE SUBSTANCE DEPENDENCE WITH WITHDRAWAL, UNCOMPLICATED
F19231	OTHER PSYCHOACTIVE SUBSTANCE DEPENDENCE WITH WITHDRAWAL DELIRIUM
F19232	OTHER PSYCHOACTIVE SUBSTANCE DEPENDENCE WITH WITHDRAWAL WITH PERCEPTUAL DISTURBANCE
F19239	OTHER PSYCHOACTIVE SUBSTANCE DEPENDENCE WITH WITHDRAWAL, UNSPECIFIED
F1924	OTHER PSYCHOACTIVE SUBSTANCE DEPENDENCE WITH PSYCHOACTIVE SUBSTANCE-INDUCED MOOD DISORDER
F19250	OTHER PSYCHOACTIVE SUBSTANCE DEPENDENCE WITH PSYCHOACTIVE SUBSTANCE-INDUCED PSYCHOTIC DISORDER WITH DELUSIONS
F19251	OTHER PSYCHOACTIVE SUBSTANCE DEPENDENCE WITH PSYCHOACTIVE SUBSTANCE-INDUCED PSYCHOTIC DISORDER WITH HALLUCINATIONS
F19259	OTHER PSYCHOACTIVE SUBSTANCE DEPENDENCE WITH PSYCHOACTIVE SUBSTANCE-INDUCED PSYCHOTIC DISORDER, UNSPECIFIED
F1926	OTHER PSYCHOACTIVE SUBSTANCE DEPENDENCE WITH PSYCHOACTIVE SUBSTANCE-INDUCED PERSISTING AMNESTIC DISORDER
F1927	OTHER PSYCHOACTIVE SUBSTANCE DEPENDENCE WITH PSYCHOACTIVE SUBSTANCE-INDUCED PERSISTING DEMENTIA
F19280	OTHER PSYCHOACTIVE SUBSTANCE DEPENDENCE WITH PSYCHOACTIVE SUBSTANCE-INDUCED ANXIETY DISORDER
F19281	OTHER PSYCHOACTIVE SUBSTANCE DEPENDENCE WITH PSYCHOACTIVE SUBSTANCE-INDUCED SEXUAL DYSFUNCTION
F19282	OTHER PSYCHOACTIVE SUBSTANCE DEPENDENCE WITH PSYCHOACTIVE SUBSTANCE-INDUCED SLEEP DISORDER
F19288	OTHER PSYCHOACTIVE SUBSTANCE DEPENDENCE WITH OTHER PSYCHOACTIVE SUBSTANCE-INDUCED DISORDER
F1929	OTHER PSYCHOACTIVE SUBSTANCE DEPENDENCE WITH UNSPECIFIED PSYCHOACTIVE SUBSTANCE-INDUCED DISORDER
F550	ABUSE OF ANTACIDS
F551	ABUSE OF HERBAL OR FOLK REMEDIES
F552	ABUSE OF LAXATIVES
F553	ABUSE OF STEROIDS OR HORMONES
F554	ABUSE OF VITAMINS
F558	ABUSE OF OTHER NON-PSYCHOACTIVE SUBSTANCES

<b>Step 3 (active claim for CNS depressant)</b>	
<b>Required quantity: 1</b>	
<b>Look back timeframe: Null</b>	
<b>Label Name</b>	<b>GCN</b>
ACETAMINOPHEN-COD #2 TABLET	70131
ACETAMINOPHEN-COD #3 TABLET	70134
ACETAMINOPHEN-COD #4 TABLET	70136
ACETAMINOPHEN-CODEINE ELIXIR	55401
ACTIQ 1,200 MCG LOZENGE	19193
ACTIQ 1,600 MCG LOZENGE	19194
ACTIQ 200 MCG LOZENGE	19204
ACTIQ 400 MCG LOZENGE	19206
ACTIQ 600 MCG LOZENGE	19191
ACTIQ 800 MCG LOZENGE	19192
ALPRAZOLAM 0.25 MG ODT	24368
ALPRAZOLAM 0.25 MG TABLET	14260
ALPRAZOLAM 0.5 MG ODT	24369
ALPRAZOLAM 0.5 MG TABLET	14261
ALPRAZOLAM 1 MG ODT	24373
ALPRAZOLAM 1 MG TABLET	14262
ALPRAZOLAM 1 MG/ML ORAL CONC	14264
ALPRAZOLAM 2 MG ODT	24374
ALPRAZOLAM 2 MG TABLET	14263
ALPRAZOLAM ER 0.5 MG TABLET	17423
ALPRAZOLAM ER 1 MG TABLET	17424
ALPRAZOLAM ER 2 MG TABLET	17425
ALPRAZOLAM ER 3 MG TABLET	19681
ALPRAZOLAM XR 0.5 MG TABLET	17423
ALPRAZOLAM XR 1 MG TABLET	17424
ALPRAZOLAM XR 2 MG TABLET	17425
ALPRAZOLAM XR 3 MG TABLET	19681
AMBIEN 5 MG TABLET	00870
AMBIEN 10 MG TABLET	00871
AMBIEN CR 6.25 MG TABLET	25456
AMBIEN CR 12.5 MG TABLET	25457
ASCOMP WITH CODEINE CAPSULE	69500
AVINZA 120 MG CAPSULE	17189
AVINZA 60 MG CAPSULE	17192
AVINZA 90 MG CAPSULE	17191
BELLADONNA-OPIUM 16.2-30 SUPP	70741

<b>Step 3 (active claim for CNS depressant)</b>	
<b>Required quantity: 1</b>	
<b>Look back timeframe: Null</b>	
<b>Label Name</b>	<b>GCN</b>
BELLADONNA-OPIUM 16.2-60 SUPP	70742
BUNAVAIL 2.1-0.3MG FILM	36677
BUNAVAIL 4.2-0.7MG FILM	36678
BUNAVAIL 6.3-1MG FILM	36679
BUPRENEX 0.3 MG/ML AMPUL	27500
BUPRENORPHINE 2 MG TABLET SL	64672
BUPRENORPHINE 8 MG TABLET SL	64673
BUPRENORPHN-NALOXON 2-0.5 MG SL	18973
BUPRENORPHN-NALOXON 8-2 MG SL	18974
BUTALB-CAFF-ACETAMINOPH-CODEIN	34988
BUTALB-CAFF-ACETAMINOPH-CODEIN	70140
BUTISOL SODIUM 30 MG TABLET	13102
BUTORPHANOL 10 MG/ML SPRAY	20351
BUTRANS 10 MCG/HR PATCH	25309
BUTRANS 15 MCG/HR PATCH	35214
BUTRANS 20 MCG/HR PATCH	25312
BUTRANS 5 MCG/HR PATCH	25308
BUTRANS 7.5 MCG/HR PATCH	36946
CAPITAL WITH CODEINE SUSP	70110
CARISOPRODOL CPD-CODEINE TAB	13995
CHLORDIAZEPOXIDE 5 MG CAPSULE	14033
CHLORDIAZEPOXIDE 10 MG CAPSULE	14031
CHLORDIAZEPOXIDE 25 MG CAPSULE	14032
CHLORDIAZEPOXIDE-CLIDINIUM CAPSULE	74801
CLONAZEPAM 0.125 MG DIS TAB	19467
CLONAZEPAM 0.5 MG DIS TABLET	19469
CLONAZEPAM 1 MG DIS TABLET	19470
CLONAZEPAM 0.25 MG ODT	19468
CLONAZEPAM 2 MG ODT	19472
CLONAZEPAM 0.5 MG TABLET	17470
CLONAZEPAM 1 MG TABLET	17471
CLONAZEPAM 2 MG TABLET	17472
CLORAZEPATE 3.75 MG TABLET	14092
CLORAZEPATE 7.5 MG TABLET	14093
CLORAZEPATE 15 MG TABLET	14090
CODEINE SULFATE 30 MG TABLET	16241

<b>Step 3 (active claim for CNS depressant)</b>	
<b>Required quantity: 1</b>	
<b>Look back timeframe: Null</b>	
<b>Label Name</b>	<b>GCN</b>
CODEINE SULFATE 60 MG TABLET	16242
DEMEROL 100 MG/ML AMPUL	25626
DEMEROL 100 MG/ML VIAL	15960
DEMEROL 50 MG TABLET	15991
DEMEROL 50 MG/ML AMPUL	25605
DEMEROL 50 MG/ML AMPUL	25608
DEMEROL 50 MG/ML VIAL	15962
DEMEROL 75 MG/1.5 ML AMPUL	25607
DIAZEPAM 5 MG/ML ORAL CONC	45500
DIAZEPAM 2.5 MG RECTAL GEL	48131
DIAZEPAM 5 MG/5 ML SOLUTION	45560
DIAZEPAM 2 MG TABLET	14221
DIAZEPAM 5 MG TABLET	14222
DIAZEPAM 10 MG TABLET	14220
DIHYDROCODEIN-ACETAMINOPH-CAFF	37532
DILAUDID 2 MG TABLET	16141
DILAUDID 4 MG TABLET	16143
DILAUDID 8 MG TABLET	16144
DILAUDID-5 1 MG/ML LIQUID	20251
DILAUDID-HP 10 MG/ML AMPUL	98596
DILAUDID-HP 250 MG VIAL	16092
DOLOPHINE HCL 10 MG TABLET	16420
DURAGESIC 100 MCG/HR PATCH	19203
DURAGESIC 12 MCG/HR PATCH	24635
DURAGESIC 25 MCG/HR PATCH	19200
DURAGESIC 50 MCG/HR PATCH	19201
DURAGESIC 75 MCG/HR PATCH	19202
EDLUAR 5 MG SL TABLET	26183
EDLUAR 10 MG SL TABLET	26182
EMBEDA ER 100-4MG CAPSULE	37692
EMBEDA ER 20-0.8MG CAPSULE	37685
EMBEDA ER 30-1.2MG CAPSULE	37686
EMBEDA ER 50-2MG CAPSULE	37687
EMBEDA ER 60-2.4MG CAPSULE	37688
EMBEDA ER 80-3.2MG CAPSULE	37689
ENDOCET 10-325 MG TABLET	14966

<b>Step 3 (active claim for CNS depressant)</b>	
<b>Required quantity: 1</b>	
<b>Look back timeframe: Null</b>	
<b>Label Name</b>	<b>GCN</b>
ENDOCET 2.5-325 MG TABLET	70492
ENDOCET 5-325 TABLET	70491
ENDOCET 7.5-325 MG TABLET	14965
ESTAZOLAM 1 MG TABLET	19181
ESTAZOLAM 2 MG TABLET	19182
EXALGO ER 12 MG TABLET	28427
EXALGO ER 16 MG TABLET	22098
EXALGO ER 32 MG TABLET	33088
EXALGO ER 8 MG TABLET	22056
FENTANYL 100 MCG/HR PATCH	19203
FENTANYL 12 MCG/HR PATCH	24635
FENTANYL 25 MCG/HR PATCH	19200
FENTANYL 37.5 MCG/HR PATCH	37952
FENTANYL 50 MCG/HR PATCH	19201
FENTANYL 62.5 MCG/HR PATCH	37947
FENTANYL 75 MCG/HR PATCH	19202
FENTANYL 87.5 MCG/HR PATCH	37948
FENTANYL CIT OTFC 1,200 MCG	19193
FENTANYL CIT OTFC 1,600 MCG	19194
FENTANYL CITRATE OTFC 200 MCG	19204
FENTANYL CITRATE OTFC 400 MCG	19206
FENTANYL CITRATE OTFC 600 MCG	19191
FENTANYL CITRATE OTFC 800 MCG	19192
FENTORA 100 MCG BUCCAL TABLET	97280
FENTORA 200 MCG BUCCAL TABLET	97281
FENTORA 400 MCG BUCCAL TABLET	97283
FENTORA 600 MCG BUCCAL TABLET	97284
FENTORA 800 MCG BUCCAL TABLET	97285
FIORICET-COD 30-50-325-40 CAP	70140
FIORINAL-COD 30-50-325-40 CAP	69500
FLURAZEPAM 15 MG CAPSULE	14250
FLURAZEPAM 30 MG CAPSULE	14251
HYCET 7.5 MG-325 MG/15 ML SOL	21146
HYDROCODON-ACETAMINOPH 2.5-325	70337
HYDROCODON-ACETAMINOPH 7.5-300	26709
HYDROCODON-ACETAMINOPH 7.5-325	12488

<b>Step 3 (active claim for CNS depressant)</b>	
<b>Required quantity: 1</b>	
<b>Look back timeframe: Null</b>	
<b>Label Name</b>	<b>GCN</b>
HYDROCODON-ACETAMINOPHEN 5-300	26470
HYDROCODON-ACETAMINOPHEN 5-325	12486
HYDROCODON-ACETAMINOPHN 10-300	22929
HYDROCODON-ACETAMINOPHN 10-325	70330
HYDROCODONE-ACETAMINOPHEN SOLN	21146
HYDROCODONE BT-IBUPROFEN TAB	63101
HYDROCODONE-IBUPROFEN 10-200	99371
HYDROCODONE-IBUPROFEN 2.5-200	16279
HYDROCODONE-IBUPROFEN 5-200	22678
HYDROMORPHONE 1 MG/ML SOLUTION	20251
HYDROMORPHONE 10 MG/ML VIAL	20451
HYDROMORPHONE 2 MG TABLET	16141
HYDROMORPHONE 3 MG SUPPOS	16130
HYDROMORPHONE 4 MG TABLET	16143
HYDROMORPHONE 8 MG TABLET	16144
HYSINGLA ER 100MG TABLET	37546
HYSINGLA ER 120MG TABLET	37547
HYSINGLA ER 20MG TABLET	37539
HYSINGLA ER 30MG TABLET	37541
HYSINGLA ER 40MG TABLET	37543
HYSINGLA ER 60MG TABLET	37544
HYSINGLA ER 80MG TABLET	37545
IBUDONE 5-200 MG TABLET	22678
IBUDONE 10-200 MG TABLET	99371
KADIAN ER 10 MG CAPSULE	26490
KADIAN ER 100 MG CAPSULE	26494
KADIAN ER 20 MG CAPSULE	26492
KADIAN ER 200 MG CAPSULE	98135
KADIAN ER 30 MG CAPSULE	97534
KADIAN ER 50 MG CAPSULE	26493
KADIAN ER 60 MG CAPSULE	97535
KADIAN ER 80 MG CAPSULE	97508
KLONOPIN 0.5 MG TABLET	17470
KLONOPIN 1 MG TABLET	17471
KLONOPIN 2 MG TABLET	17472
LAZANDA 100MCG SPRAY/PUMP	27648

<b>Step 3 (active claim for CNS depressant)</b>	
<b>Required quantity: 1</b>	
<b>Look back timeframe: Null</b>	
<b>Label Name</b>	<b>GCN</b>
LAZANDA 300 MCG NASAL SPRAY	41539
LAZANDA 400MCG SPRAY/PUMP	29146
LEVORPHANOL 2 MG TABLET	16350
LORAZEPAM 0.5 MG TABLET	14160
LORAZEPAM 1 MG TABLET	14161
LORAZEPAM 2 MG TABLET	14162
LORAZEPAM 2 MG/ML VIAL	14140
LORAZEPAM 4 MG/ML VIAL	14141
LORAZEPAM INTENSOL 2 MG/ML	19601
LORCET 5-325 MG TABLET	12486
LORCET HD 10-325 MG TABLET	70330
LORCET PLUS 7.5-325 MG TABLET	12488
LORTAB 10-325 TABLET	70330
LORTAB 5-325 TABLET	12486
LORTAB 7.5-325 TABLET	12488
LUNESTA 1 MG TABLET	23927
LUNESTA 2 MG TABLET	23926
LUNESTA 3 MG TABLET	23925
MEPERIDINE 100 MG TABLET	15990
MEPERIDINE 100 MG/ML VIAL	25627
MEPERIDINE 25 MG/ML VIAL	25613
MEPERIDINE 50 MG TABLET	15991
MEPERIDINE 50 MG/5 ML SOLUTION	15980
MEPERIDINE 50 MG/ML VIAL	25609
MEPROBAMATE 200 MG TABLET	13801
MEPROBAMATE 400 MG TABLET	13802
METHADONE 10 MG/5 ML SOLUTION	16410
METHADONE 10 MG/ML ORAL CONC	16415
METHADONE 40 MG TABLET DISPR	16423
METHADONE 5 MG/5 ML SOLUTION	16400
METHADONE HCL 10 MG TABLET	16420
METHADONE HCL 5 MG TABLET	16422
METHADONE INTENSOL 10 MG/ML	16415
METHADOSE 10 MG TABLET	16420
METHADOSE 40 MG TABLET DISPR	16423
MORPHABOND ER 100 MG TABLET	39856



<b>Step 3 (active claim for CNS depressant)</b>	
<b>Required quantity: 1</b>	
<b>Look back timeframe: Null</b>	
<b>Label Name</b>	<b>GCN</b>
MORPHABOND ER 15 MG TABLET	39853
MORPHABOND ER 30 MG TABLET	39854
MORPHABOND ER 60 MG TABLET	39855
MORPHINE 10 MG/ML CARPUJECT	33312
MORPHINE 15 MG/ML CARPUJECT	33313
MORPHINE 15 MG/ML VIAL	16041
MORPHINE 2 MG/ML CARPUJECT	33308
MORPHINE 4 MG/ML CARPUJECT	33309
MORPHINE 8 MG/ML SYRINGE	33765
MORPHINE SULF 10 MG/5 ML SOLN	16060
MORPHINE SULF 100 MG/5 ML SOLN	16063
MORPHINE SULF 10MG/ML VIAL	16040
MORPHINE SULF 20 MG/5 ML SOLN	16062
MORPHINE SULF 5 MG/ML VIAL	16042
MORPHINE SULF 8 MG/ML VIAL	16043
MORPHINE SULF CR 15 MG TABLET	16643
MORPHINE SULF CR 30 MG TABLET	16640
MORPHINE SULF CR 60 MG TABLET	16641
MORPHINE SULF ER 100 MG TABLET	16642
MORPHINE SULF ER 200 MG TABLET	16078
MORPHINE SULFATE 50 MG/ML VIAL	16271
MORPHINE SULFATE ER 100MG CAP	26494
MORPHINE SULFATE ER 10MG CAP	26490
MORPHINE SULFATE ER 120MG CAP	17189
MORPHINE SULFATE ER 20MG CAP	26492
MORPHINE SULFATE ER 30MG CAP	17193
MORPHINE SULFATE ER 30MG CAP	97534
MORPHINE SULFATE ER 45MG CAP	16212
MORPHINE SULFATE ER 50MG CAP	26493
MORPHINE SULFATE ER 60MG CAP	17192
MORPHINE SULFATE ER 60MG CAP	97535
MORPHINE SULFATE ER 75MG CAP	16213
MORPHINE SULFATE ER 80 MG CAP	97508
MORPHINE SULFATE ER 90MG CAP	17191
MORPHINE SULFATE IR 15 MG TAB	16070

<b>Step 3 (active claim for CNS depressant)</b>	
<b>Required quantity: 1</b>	
<b>Look back timeframe: Null</b>	
<b>Label Name</b>	<b>GCN</b>
MORPHINE SULFATE IR 30 MG TAB	16071
MS CONTIN 100 MG TABLET	16642
MS CONTIN 15 MG TABLET	16643
MS CONTIN 200 MG TABLET	16078
MS CONTIN 60 MG TABLET	16641
MS CONTIN CR 30 MG TABLET	16640
NALBUPHINE 10 MG/ML AMPUL	16360
NALBUPHINE 200 MG/10 ML VIAL	16371
NIRAVAM 0.25 MG ODT	24368
NIRAVAM 0.5 MG ODT	24369
NIRAVAM 1 MG ODT	24373
NIRAVAM 2 MG ODT	24374
NORCO 10-325 TABLET	70330
NUCYNTA 100 MG TABLET	26165
NUCYNTA 50 MG TABLET	26163
NUCYNTA 75 MG TABLET	26164
NUCYNTA ER 100MG TABLET	29788
NUCYNTA ER 150MG TABLET	29789
NUCYNTA ER 200MG TABLET	29791
NUCYNTA ER 250MG TABLET	29792
NUCYNTA ER 50MG TABLET	29787
OPANA 10 MG TABLET	27244
OPANA 5 MG TABLET	27243
OPANA ER 10 MG TABLET	27248
OPANA ER 15 MG TABLET	99493
OPANA ER 20 MG TABLET	27249
OPANA ER 30 MG TABLET	99494
OPANA ER 40 MG TABLET	27253
OPANA ER 5 MG TABLET	27247
OPANA ER 7.5 MG TABLET	99492
OPIUM TINCTURE 10 MG/ML	16471
OXAZEPAM 10 MG CAPSULE	14230
OXAZEPAM 15 MG CAPSULE	14231
OXAZEPAM 30 MG CAPSULE	14232
OXYCODON-ACETAMINOPHEN 2.5-325	70492
OXYCODONE-ACETAMINOPHEN 5-325	70491

<b>Step 3 (active claim for CNS depressant)</b>	
<b>Required quantity: 1</b>	
<b>Look back timeframe: Null</b>	
<b>Label Name</b>	<b>GCN</b>
OXYCODON-ACETAMINOPHEN 7.5-325	14965
OXYCODONE-ACETAMINOPHEN 10-325	14966
OXYCODONE-ASA 4.83-325 TABLET	26836
OXYCODONE CONC 20 MG/ML SOLN	16281
OXYCODONE HCL 10 MG TABLET	16291
OXYCODONE HCL 10 MG TABLET ER	37158
OXYCODONE HCL 15 MG TABLET	20091
OXYCODONE HCL 20 MG TABLET	21194
OXYCODONE HCL 20 MG TABLET ER	37161
OXYCODONE HCL 30 MG TABLET	20092
OXYCODONE HCL 40 MG TABLET ER	37163
OXYCODONE HCL 5 MG CAPSULE	16285
OXYCODONE HCL 5 MG TABLET	16290
OXYCODONE HCL 5 MG/5 ML SOL	16280
OXYCODONE HCL ER 80 MG TABLET	37165
OXYCODONE-IBUPROFEN 5-400 TAB	23827
OXYCONTIN 10 MG TABLET	16282
OXYCONTIN 15 MG TABLET	99238
OXYCONTIN 20 MG TABLET	16283
OXYCONTIN 30 MG TABLET	99239
OXYCONTIN 40 MG TABLET	16284
OXYCONTIN 60 MG TABLET	99240
OXYCONTIN 80 MG TABLET	16286
OXYMORPHONE HCL 5 MG TABLET	27243
OXYMORPHONE HCL 10 MG TABLET	27244
OXYMORPHONE HCL ER 10 MG TAB	27248
OXYMORPHONE HCL ER 15 MG TAB	99493
OXYMORPHONE HCL ER 20 MG TAB	27249
OXYMORPHONE HCL ER 30 MG TAB	99494
OXYMORPHONE HCL ER 40 MG TAB	27253
OXYMORPHONE HCL ER 5 MG TABLET	27247
OXYMORPHONE HCL ER 7.5 MG TAB	99492
PENTAZOCINE-NALOXONE TABLET	71060
PERCOCET 10-325 MG TABLET	14966
PERCOCET 2.5-325 MG TABLET	70492
PERCOCET 5-325 MG TABLET	70491

<b>Step 3 (active claim for CNS depressant)</b>	
<b>Required quantity: 1</b>	
<b>Look back timeframe: Null</b>	
<b>Label Name</b>	<b>GCN</b>
PERCOCET 7.5-325 MG TABLET	14965
PHENOBARBITAL 20 MG/5 ML ELIX	12956
PHENOBARBITAL 15 MG TABLET	12971
PHENOBARBITAL 16.2 MG TABLET	97706
PHENOBARBITAL 30 MG TABLET	12973
PHENOBARBITAL 32.4 MG TABLET	97965
PHENOBARBITAL 60 MG TABLET	12972
PHENOBARBITAL 64.8 MG TABLET	97966
PHENOBARBITAL 97.2 MG TABLET	97967
PHENOBARBITAL 100 MG TABLET	12975
PHENOBARBITAL 65 MG/ML VIAL	12894
PHENOBARBITAL 130 MG/ML VIAL	12892
RESTORIL 7.5 MG CAPSULE	13845
RESTORIL 15 MG CAPSULE	13840
RESTORIL 22.5 MG CAPSULE	24036
RESTORIL 30 MG CAPSULE	13841
ROXICODONE 15 MG TABLET	20091
ROXICODONE 30 MG TABLET	20092
ROXYBOND 15 MG TABLET	44877
ROXYBOND 30 MG TABLET	44878
ROXYBOND 5 MG TABLET	32047
ROZEREM 8 MG TABLET	25202
SONATA 5 MG CAPSULE	92713
SONATA 10 MG CAPSULE	92723
SUBOXONE 12MG-3MG FILM	33744
SUBOXONE 2MG-0.5MG FILM	28958
SUBOXONE 4MG-1MG FILM	33741
SUBOXONE 8MG-2MG FILM	28959
SUBSYS 100 MCG SPRAY	31187
SUBSYS 200 MCG SPRAY	31189
SUBSYS 400 MCG SPRAY	31188
SUBSYS 600 MCG SPRAY	31192
SUBSYS 800 MCG SPRAY	31193
SUBSYS 1,200 MCG SPRAY	31596
SUBSYS 1,600 MCG SPRAY	31597
TEMAZEPAM 7.5 MG CAPSULE	13845

<b>Step 3 (active claim for CNS depressant)</b>	
<b>Required quantity: 1</b>	
<b>Look back timeframe: Null</b>	
<b>Label Name</b>	<b>GCN</b>
TEMAZEPAM 15 MG CAPSULE	13840
TEMAZEPAM 22.5 MG CAPSULE	24036
TEMAZEPAM 30 MG CAPSULE	13841
TRAMADOL ER 100 MG TABLET	99151
TRAMADOL ER 200 MG TABLET	99152
TRAMADOL ER 300 MG TABLET	99153
TRAMADOL HCL 50 MG TABLET	07221
TRAMADOL HCL ER 100 MG CAPSULE	30382
TRAMADOL HCL ER 100 MG TABLET	26387
TRAMADOL HCL ER 200 MG CAPSULE	30383
TRAMADOL HCL ER 200 MG TABLET	50417
TRAMADOL HCL ER 300 MG CAPSULE	30384
TRAMADOL-ACETAMINOPEN 37.5-325	13909
TRANXENE SD 11.25 MG TABLET	14100
TRANXENE SD 22.5 MG TAB	14091
TRANXENE T-TAB 3.75 MG	14092
TRANXENE T-TAB 7.5 MG	14093
TRANXENE T-TAB 15 MG	14090
TRIAZOLAM 0.25 MG TABLET	14280
TRIAZOLAM 0.125 MG TABLET	14282
TYLENOL WITH CODEINE #3 TABLET	70134
TYLENOL WITH CODEINE #4 TABLET	70136
ULTRACET TABLET	13909
ULTRAM 50 MG TABLET	07221
VICODIN 5-300 TABLET	26470
VICODIN ES 7.5-300 MG TABLET	26709
VICODIN HP 10-300 MG TABLET	70363
VICOPROFEN 200-7.5 MG TAB	63101
XANAX 0.25 MG TABLET	14260
XANAX 0.5 MG TABLET	14261
XANAX 1 MG TABLET	14262
XANAX 2 MG TABLET	14263
XANAX XR 0.5 MG TABLET	17423
XANAX XR 1 MG TABLET	17424
XANAX XR 2 MG TABLET	17425
XANAX XR 3 MG TABLET	19681

<b>Step 3 (active claim for CNS depressant)</b>	
<b>Required quantity: 1</b>	
<b>Look back timeframe: Null</b>	
<b>Label Name</b>	<b>GCN</b>
XTAMPZA ER 9 MG CAPSULE	41272
XTAMPZA ER 13.5 MG CAPSULE	41273
XTAMPZA ER 18 MG CAPSULE	41274
XTAMPZA ER 27 MG CAPSULE	41275
XTAMPZA ER 36 MG CAPSULE	41276
ZALEPLON 5 MG CAPSULE	92713
ZALEPLON 10 MG CAPSULE	92723
ZEBUTAL CAPSULE	72510
ZOLPIDEM TART ER 6.25 MG TAB	25456
ZOLPIDEM TART ER 12.5 MG TAB	25457
ZOLPIDEM TARTRATE 5 MG TABLET	00870
ZOLPIDEM TARTRATE 10 MG TABLET	00871
ZUBSOLV 0.7-0.18 MG TABLET SL	42843
ZUBSOLV 1.4-0.36MG TABLET SL	34904
ZUBSOLV 11.4-2.9 MG TABLET SL	37824
ZUBSOLV 2.9-0.71 MG TABLET SL	39394
ZUBSOLV 5.7-1.4MG TABLET SL	34905
ZUBSOLV 8.6-2.1MG TABLE SL	37823

<b>Step 5 (diagnosis of narcolepsy or cataplexy)</b>	
<b>Required diagnosis: 1</b>	
<b>Look back timeframe: 730 days</b>	
<b>ICD-10 Code</b>	<b>Description</b>
G47411	NARCOLEPSY WITH CATAPLEXY
G47419	NARCOLEPSY WITHOUT CATAPLEXY
G47421	NARCOLEPSY IN CONDITIONS CLASSIFIED ELSEWHERE WITH CATAPLEXY
G47429	NARCOLEPSY IN CONDITIONS CLASSIFIED ELSEWHERE WITHOUT CATAPLEXY



## Xyrem (Sodium Oxybate)

### Clinical Criteria References

1. 2015 ICD-9-CM Diagnosis Codes. 2015. Available at [www.icd9data.com](http://www.icd9data.com). Accessed on April 3, 2015.
2. 2015 ICD-10-CM Diagnosis Codes. 2015. Available at [www.icd10data.com](http://www.icd10data.com). Accessed on April 3, 2015.
3. American Medical Association data files. 2015 ICD-9-CM Diagnosis Codes. Available at [www.commerce.ama-assn.org](http://www.commerce.ama-assn.org).
4. American Medical Association data files. 2015 ICD-10-CM Diagnosis Codes. Available at [www.commerce.ama-assn.org](http://www.commerce.ama-assn.org).
5. Clinical Pharmacology [online database]. Tampa, FL: Elsevier/Gold Standard, Inc.; 2018. Available at [www.clinicalpharmacology.com](http://www.clinicalpharmacology.com). Accessed on April 12, 2018.
6. Micromedex [online database]. Available at [www.micromedexsolutions.com](http://www.micromedexsolutions.com). Accessed on April 12, 2018.
7. Xyrem Prescribing Information. Palo Alto, CA. Jazz Pharmaceuticals. October 2018.
8. Krahn LE, Hershner S, Loeding LD, et al. Quality Measures for the Care of Patients with Narcolepsy. *Journal of Clinical Sleep Medicine* 2015;11(3):335-55.

## Publication History

The Publication History records the publication iterations and revisions to this document. Notes for the *most current revision* are also provided in the **Revision Notes** on the first page of this document.

Publication Date	Notes
03/09/2011	Initial publication and posting to website
10/26/2011	<ul style="list-style-type: none"> <li>Added a new section to specify the drugs requiring prior authorization</li> <li>Modified criteria logic and logic diagram to identify the steps that are executed manually</li> <li>In the "Clinical Edit Criteria Supporting Tables" section, revised tables to specify the drug names and GCNs pertinent to steps 3 and 5 of the logic diagram</li> <li>In the "Clinical Edit Criteria Supporting Tables" section, revised tables to specify the diagnosis codes pertinent to steps 4 and 7 of the logic diagram</li> </ul>
04/03/2015	<ul style="list-style-type: none"> <li>Updated to include ICD-10s</li> </ul>
04/12/2018	<ul style="list-style-type: none"> <li>Annual review by staff</li> <li>Removed ICD-9 codes</li> <li>Updated logic and logic diagram</li> <li>Updated Table 3</li> </ul>
12/27/2018	<ul style="list-style-type: none"> <li>Updated step 1 of logic diagram, page 4. Yes = deny; No = go to #2</li> </ul>
01/21/2019	<ul style="list-style-type: none"> <li>Updated age question in criteria logic and logic diagram to reflect new labeling (less than 7 years of age, deny)</li> <li>Updated GCNs in Table 3</li> <li>Updated References</li> </ul>
03/29/2019	<ul style="list-style-type: none"> <li>Updated to include formulary statement (The listed GCNS may not be an indication of TX Medicaid Formulary coverage. To learn the current formulary coverage, visit <a href="http://TxVendorDrug.com/formulary/formulary-search">TxVendorDrug.com/formulary/formulary-search</a>.) on each 'Drug Requiring PA' table</li> </ul>
09/20/2020	<ul style="list-style-type: none"> <li>Added question for prescribed by, or in consultation with, a specialist to criteria logic and logic diagram</li> </ul>
10/08/2021	<ul style="list-style-type: none"> <li>Removed specialist requirement from criteria</li> </ul>
02/01/2023	<ul style="list-style-type: none"> <li>Added GCN for sodium oxybate solution (18104)</li> </ul>